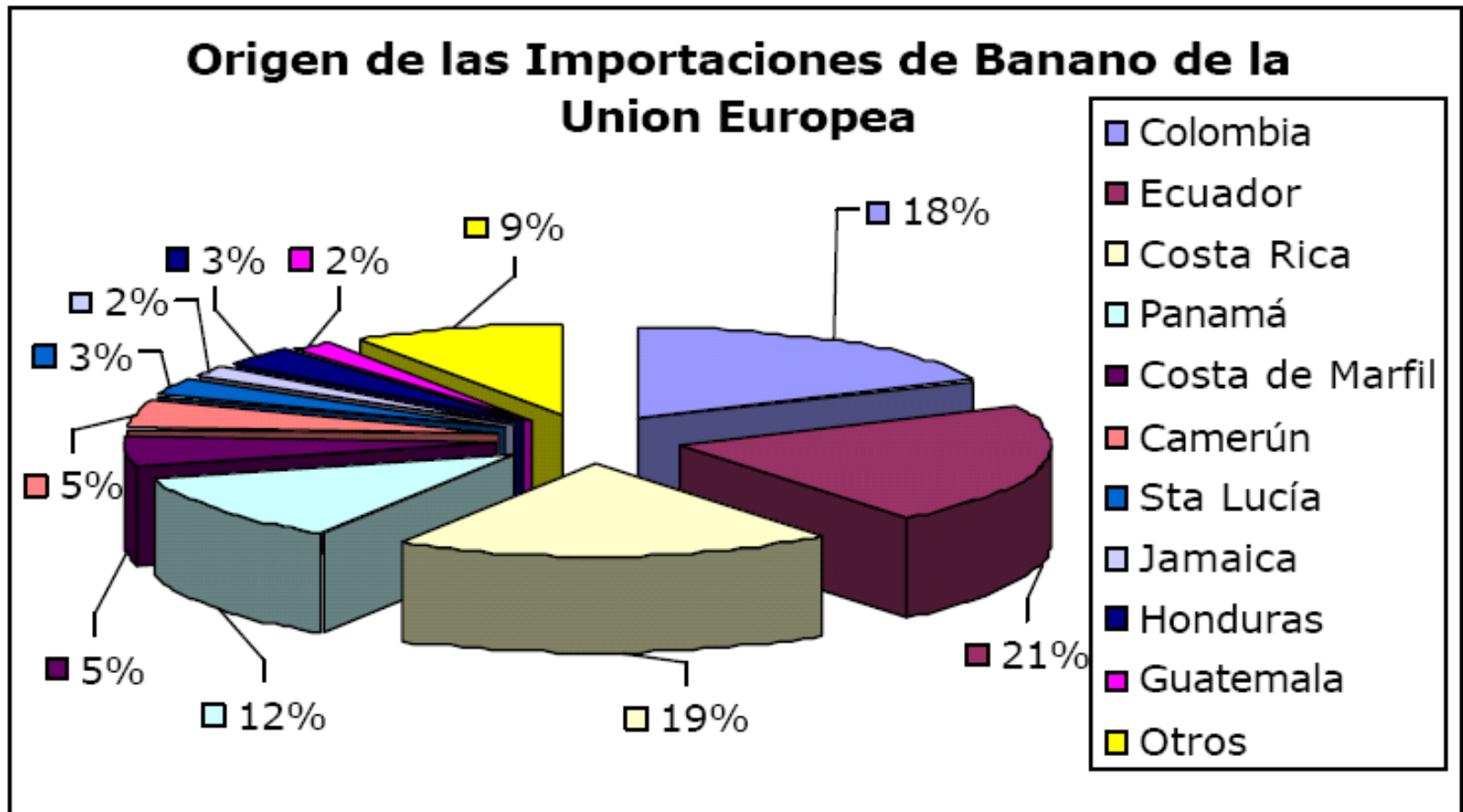




Banana trade from plantation to consumer

By Hans Frans (DP Survey Group)

- Export figures



Fuente: FAO

Banana trade from plantation to consumer

- Fruit traders



AgroFair



Banana trade from plantation to consumer

- Production of bananas
 - plantations



Banana trade from plantation to consumer

- Production of bananas
 - plantations



Banana trade from plantation to consumer

- Loading of barges and seagoing vessel



Banana trade from plantation to consumer

- Loading of the vessel
 - Pre-cooling holds
 - Temperature + yellow control
 - Stowage
 - Airbags / foam



- Carrying instructions
 - pre-cooling
 - shock treatment – cooling down
 - delivery air temperature
 - reduction period
 - ventilation
 - monitoring

- Controlled atmosphere
 - low oxygen
 - low respiration
 - longer green life
 - risks involved

- Discharge in Europe
 - Pre-discharge survey
 - Pulptemperatures
 - CO₂-measurements
 - Logbooks
 - Witnessing opening hatches
 - Discharge supervision
 - Yellow control
 - Temperature monitoring
 - Stevedore damage
 - Quality control

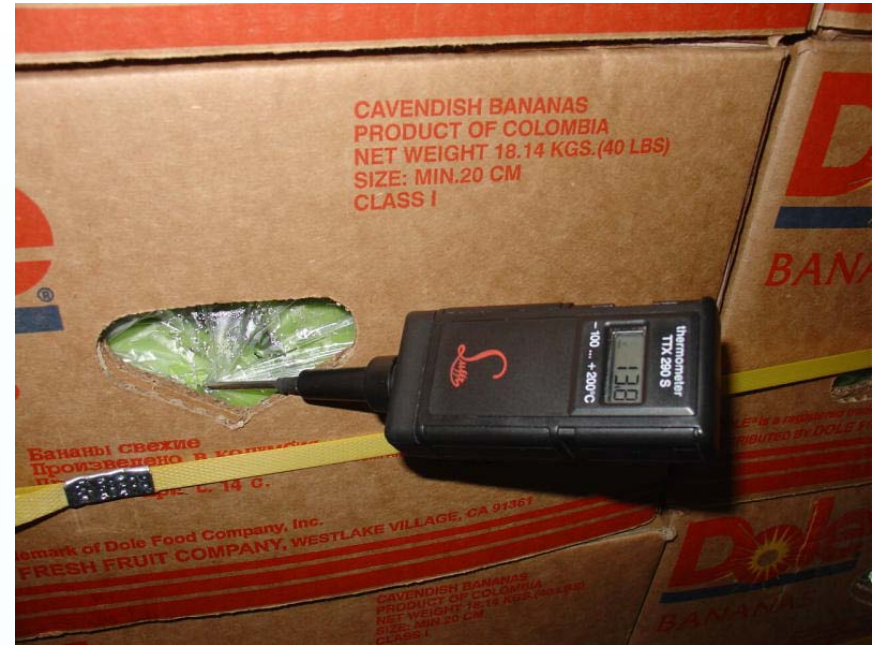
Banana trade from plantation to consumer

- Discharge in Europe



Banana trade from plantation to consumer

- Discharge in Europe



Banana trade from plantation to consumer

- Discharge in Europe



Banana trade from plantation to consumer

- Main damage / defects
 - Shift of cargo / mechanical damage



- Main damage / defects
 - chilling damage



Banana trade from plantation to consumer

- Main damage / defects
 - ripe and turning fruit and cosmetic defects



Banana trade from plantation to consumer

- Delivery to end receivers



Banana trade from plantation to consumer

- Ripening facilities
 - Transport by truck or rail
 - Ripening chambers



THE END

THE END

THE END