



International loss adjusters & surveyors

IUMI

Webinar 31/08/2016

Insuring perishables, a challenge!

Johan Van der Meirsch
Manager Marine Department
DP SURVEY GROUP, Belgium

Insuring perishables, a challenge !

- **IUMI Disclaimer**
- No warranties are made regarding the thoroughness or accuracy of the information contained in this content or any part of it. Nothing in this information should be interpreted as providing definitive guidance on any question relating to policy interpretation, underwriting practice, or any other issues in insurance coverage. Comments of instructor(s) do not necessarily represent the opinion of IUMI.

Two green apples are shown, one above the other, with a soft shadow cast by the top apple onto the bottom one. The apples are fresh and have a natural stem.

**INSURING
PERISHABLES
A CHALLENGE!**

Insuring perishables, a challenge !

- Pre shipment / Origin
 - Quality / plantation
 - Black spot / sanctions
 - PPECB / cold treatment
 - Transportation
 - Containerized cargo / technical problems / delay
 - Conventional reefer vessels
 - Reefer warehouses
 - Cross contamination
 - Technical breakdown
 - Destination
 - Consignee claims / Market situation
 - Local phytosanitary legislation
- 
- A stylized globe graphic composed of a grid of small, light blue dots, centered in the background of the slide. The globe is surrounded by faint, glowing blue lines that suggest global connectivity or data flow.

Insuring perishables, a challenge !

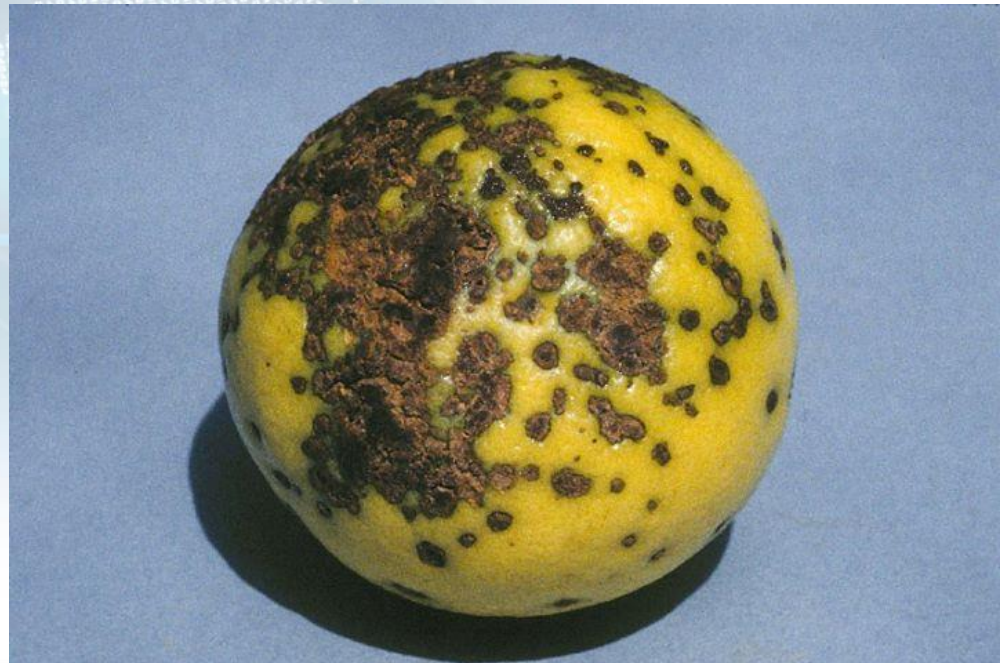
- Pre shipment / Origin
 - Quality / plantation



Insuring perishables, a challenge !

CBS: CITRUS BLACK SPOT (picture of the fungus)

- Disease / fungus
- Region
- Cost
- Sanctions
- Protectionism Spain? – difference in testing results per country



Insuring perishables, a challenge !

- PPECB
- Perishable Product Export Control Board
 - Independent
 - Mandated / accredited DAFF and EU
- 4 Service Fields
 - Product inspection
 - Food safety
 - Cold Chain management
 - Laboratory



PPECB

Insuring perishables, a challenge!

Cold steri / cold treatment

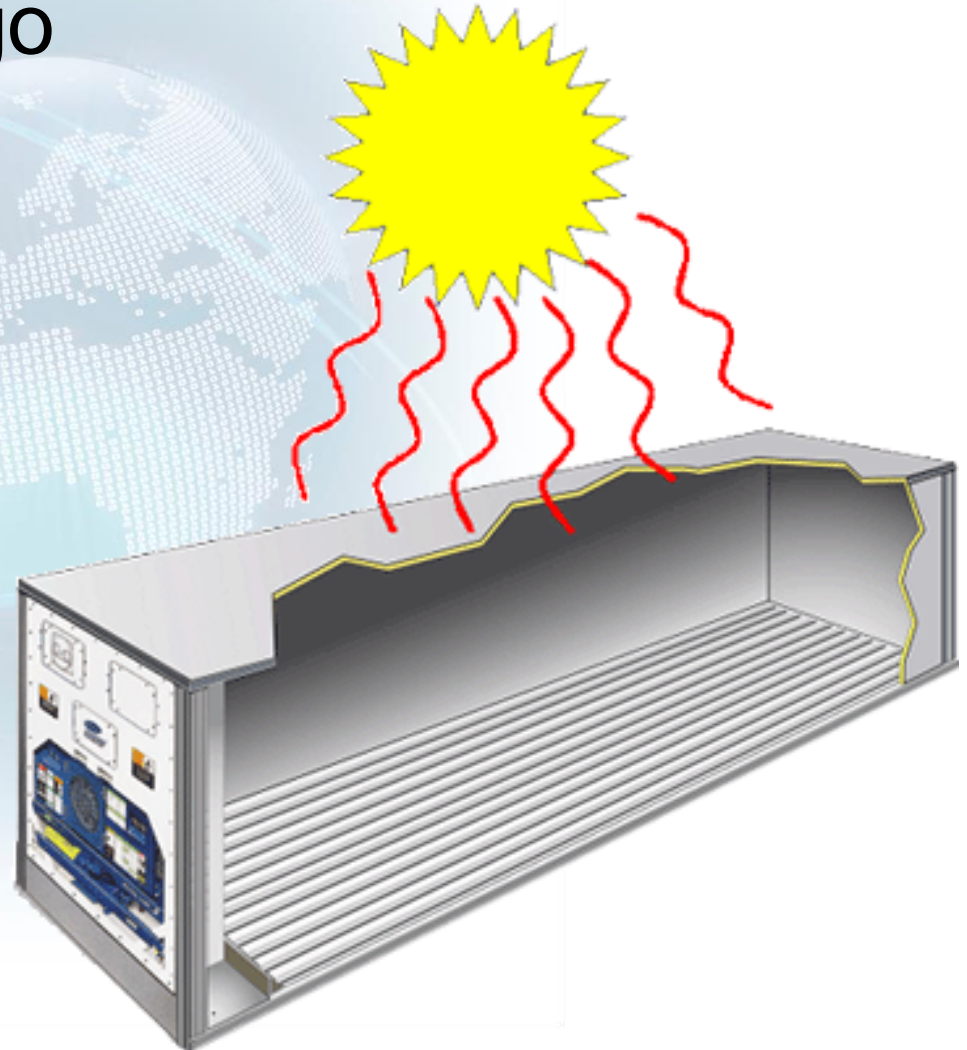
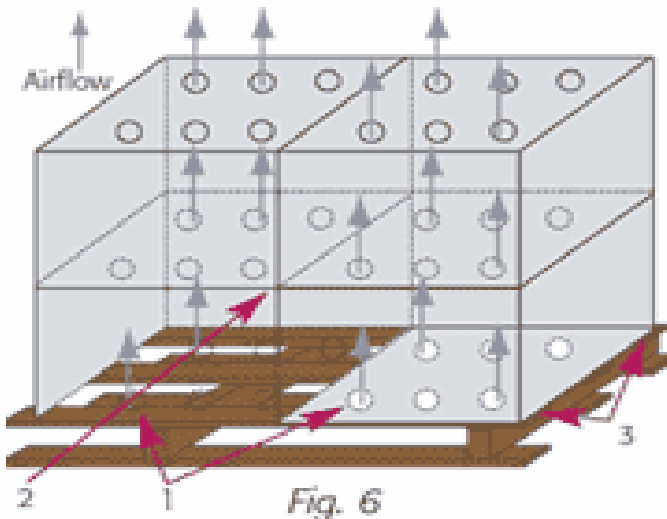
- Eliminate pests
- Reduce transport temperature during certain time
- Inspection at origin and destination
- Problems:
 - Different legislations per destination / different temperature settings
 - required temperature
 - (-0,27°C for 24 days) / not above 1,11°C
 - Spikes – 8 hours additional cooling
 - What about delays / cargo damage?
 - Extra costs / repalletisation



Insuring perishables, a challenge!

- Containerized cargo
 - Packing
 - Pre cooling cargo

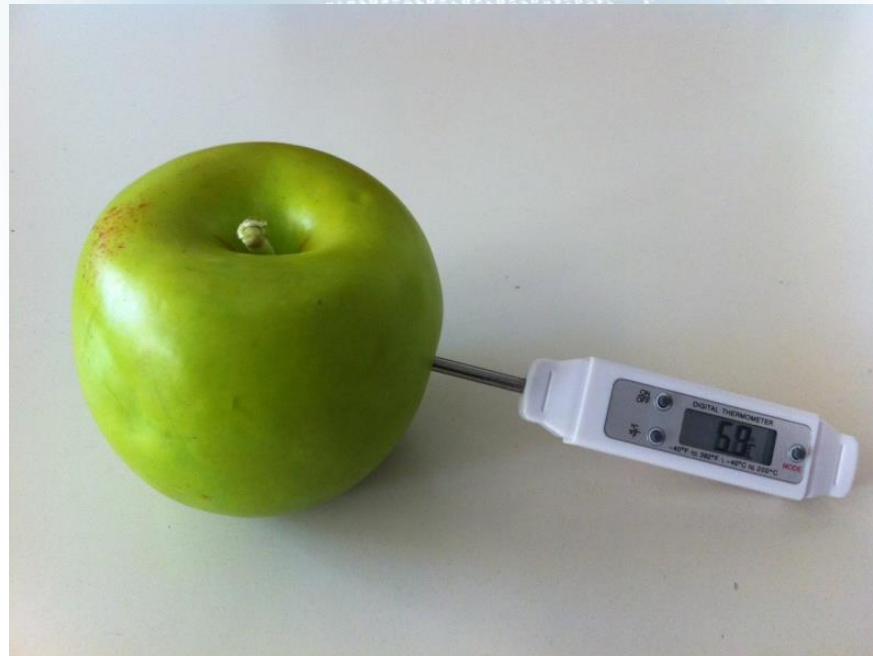
1. Carton alignment for unrestricted airflow
2. Strength of cartons in the corners
3. Corners of cartons supported



Insuring perishables, a challenge!

- Temperature

- Each commodity requires different temperature and ventilation settings
- Combination / Contradiction with Cold Steri requirements



Insuring perishables, a challenge!

- Different types of containers

- Conventional reefer container (20' / 40' / 40'HC)
- Star Care
- QUEST I & QUEST II
- Starfresh
- MA (modified air)
- AFAM (Automated Fresh Air Management)
-



Insuring perishables, a challenge!



Insuring perishables, a challenge!



Insuring perishables, a challenge!



Insuring perishables, a challenge!

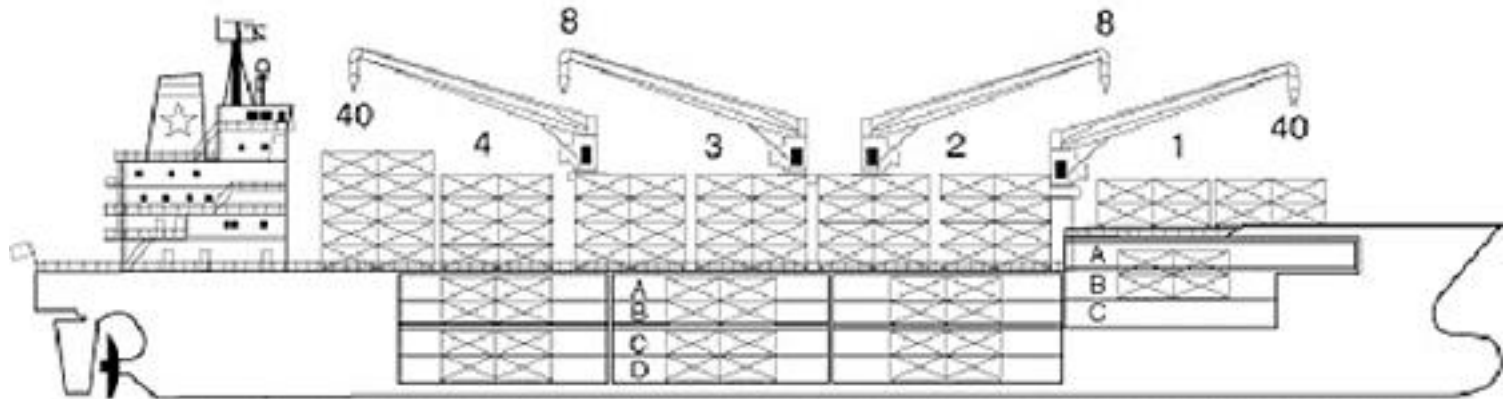


Insuring perishables, a challenge!

- Reefer vessels



Insuring perishables, a challenge!



Insuring perishables, a challenge!



Insuring perishables, a challenge!

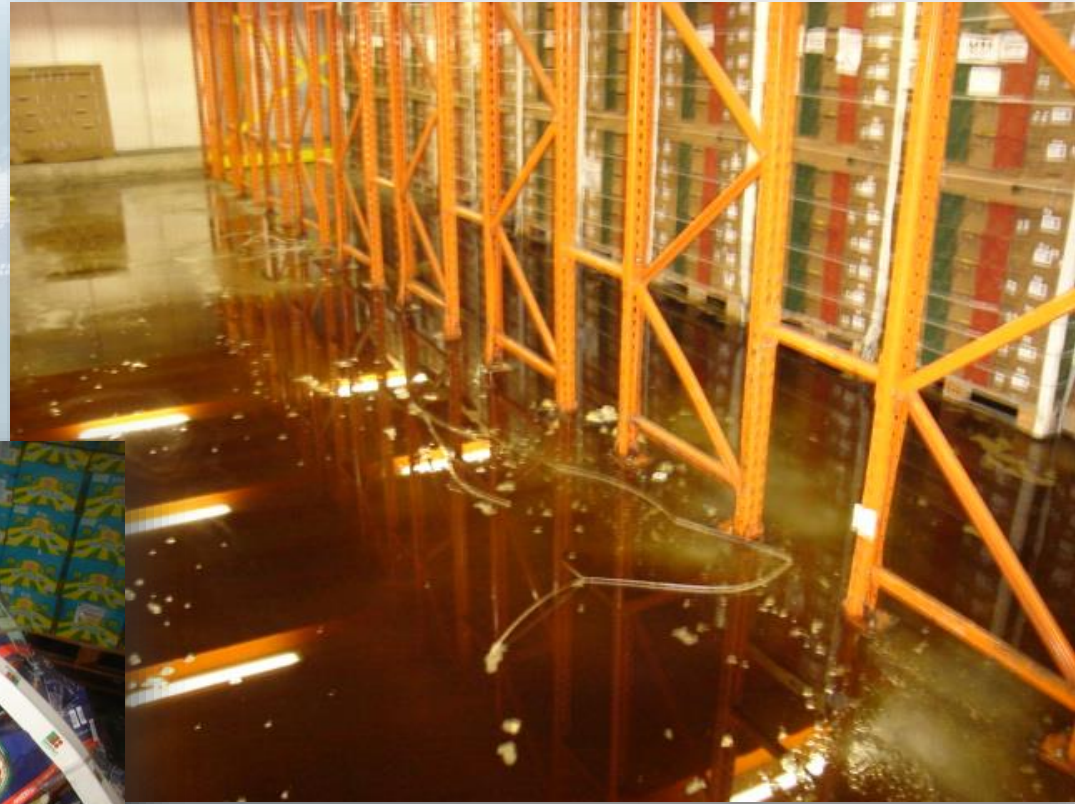


Insuring perishables, a challenge!

- Reefer warehouses
 - Technical breakdown cooling
 - Automated warehouses / 11,000 pallets
 - Cross contamination cargo
 - Fuel
 - Mould



Insuring perishables, a challenge!



Insuring perishables, a challenge!



Insuring perishables, a challenge!



Insuring perishables, a challenge!

- Commercial / customer claims
 - Delay in transport
 - Transport damage
 - Quality issues
 - Market situation



Insuring perishables, a challenge!



- Thank you for joining!
- Survey
- Video available at www.iumi.com
- Next session: 7 September 2016 on “York Antwerp Rules“
- Questions? Hendrike.Kuehl@iumi.com